



181  
FREMONT  
RESIDENCES

2- AND 3-BEDROOM ALL-CORNER RESIDENCES  
415.282.0888 [info@181fremont.com](mailto:info@181fremont.com) [181fremont.com](http://181fremont.com)

# Crafted to Perfection—Inside & Out

At 802 feet tall, 181 Fremont offers 55 ultra-luxury residences and 6,500 square feet of residential amenities, atop 435,000 square feet of Class A+ commercial space. Residences start at over 500 feet above the ground, with breathtaking panoramic views from every home, and interiors conceived by internationally renowned Orlando Diaz-Azcuy Design Associates (ODADA) to create an unparalleled living experience. Twelve accessory suites are also available for purchase by the 55 original owners – for guests, home office or staff.

The most resilient tall building on the West Coast, featuring the deepest caissons of any residential tower in the city—burrowing nearly 260 feet below ground, anchored into bedrock—181 Fremont is also the first mixed-use building in San Francisco to achieve LEED Platinum Certification. Located in the new center of downtown San Francisco, 181 Fremont stands amidst major employers, culture and dining, and next to the 5.4-acre Salesforce Park and Transit Center, with access to every major transit system in the city.

## ENGINEERING & ARCHITECTURE

- San Francisco's first LEED Platinum Certified mixed-use building
- Designed by Jeffrey Heller of Heller Manus Architects
- Caissons burrow 260 feet below the ground—deeper than any residential tower in San Francisco—and anchor to bedrock
- Recipient of numerous awards and recognitions, including: 2019 American Institute of Steel Construction Award; Award of Excellence for Best Tall Building (200-299 meters); and REDI Gold Rating for its beyond code seismic construction

## DESIGNER RESIDENCES

- Four or fewer residences on each floor—each uniquely sized and shaped—with floor plans from approximately 1,200 to 7,000 square feet
- Bay, bridge and city views from floor-to-ceiling windows
- Polished Italian Calacatta Carrara marble entry door frames and polished brass entry door handles custom-forged by Parisian artisans at Série Rare
- Ceruse-ebonized oak wall features and French oak floors with seven-day fumed treatment and an Athena Athinolia finish
- Integrated pre-wired central control panel for smart home technology and Lutron electrically-controlled solar window shades, with blackout shade option
- Kitchens with Brazilian White Macaubas quartzite countertops, Valcucine cabinets with hardened glass fronts and a premium appliance package featuring Miele, Sub-Zero and Liebherr
- Primary baths with full-height slab Arabescato Corchia marble and radiant-heated Lincoln marble floors

## AMENITIES & RESIDENT SERVICES

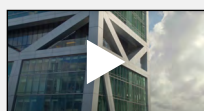
- The Residents' Club, a full floor of amenities on the 39th floor includes:
  - A 360-degree outdoor wraparound outdoor terrace with a fireside gathering area and panoramic views of San Francisco's skyline.
  - The Conservatory – Elegant sitting room for relaxation and casual meetings
  - Bay Terrace – Lounge area and piano bar with bridge views for intimate cocktail parties and private events
  - North Lounge – Media room for screenings and viewing occasions
  - Fitness center with state-of-the-art equipment and yoga room
  - Conference room
  - Catering kitchen
- On-site concierge
- 24-hour lobby staff and 24-hour valet parking

## LOCATION

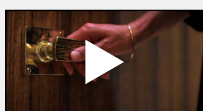
- Located in the East Cut, San Francisco's most vibrant new neighborhood central to world-renowned landmarks, restaurants, museums and shopping
- Minutes to The Embarcadero, Ferry Building, Union Square and Oracle Park
- The only residential building in San Francisco to offer direct access to Salesforce Park via 7th-level skybridge

415.282.0888  
181FREMONT.COM

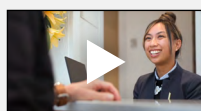
## Click To Watch Our Featured Films



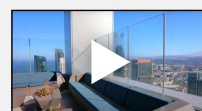
Overview



Finer Details



Resident Services



Residents' Club