

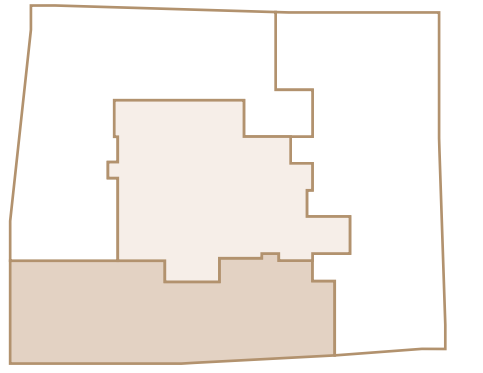
67C

2 Bedroom
2.5 Bathroom

1,748 sq ft

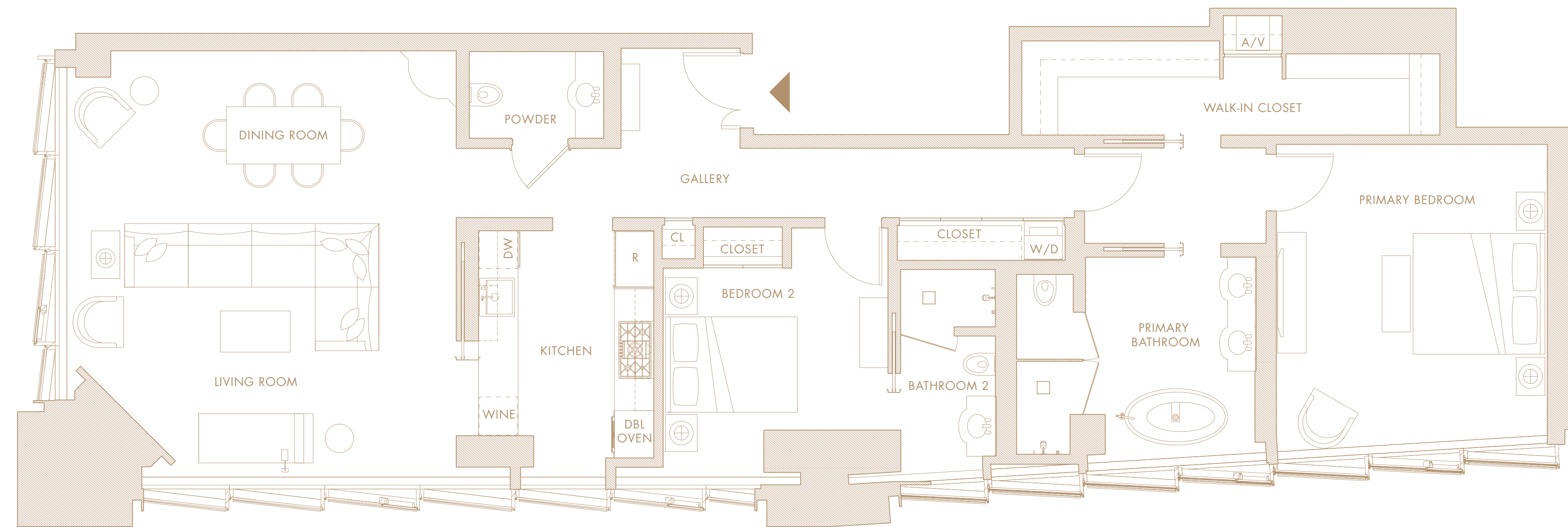
162.4 square meters

- Gracious entry gallery
- Sweeping northwest and southwest floor-to-ceiling views
- 9' ceilings in living room and bedrooms
- Living room with corner entertainment cabinet
- Hideaway kitchen with sliding panel, double oven, refrigerator, and dishwasher
- Primary bedroom with southwest views and walk-in closet
- Primary bathroom with freestanding soaking tub, separate shower, water closet, and dual vanities
- Second bedroom with en-suite bathroom
- Powder room
- Washer/dryer



FREMONT STREET

HOWARD STREET



0' 1' 2' 4' 8'
SCALE: 1/4" = 1'

